



# Model 6726 & 6724 Pivoting Trailer Stand



**WARNING** READ INSTRUCTIONS CAREFULLY BEFORE ATTEMPTING TO INSTALL, OPERATE OR SERVICE THIS TRAILER STAND. FAILURE TO COMPLY WITH INSTRUCTIONS COULD RESULT IN SERIOUS INJURY. RETAIN THESE INSTRUCTIONS FOR FUTURE REFERENCE.

## ASSEMBLY INSTRUCTIONS

Place two of the carriage bolts, Item G, into the square holes of the swivel bracket washer, Item K, and position behind swivel bracket of jack (See Fig. 1). Position cloverleaf washer, Item L, into the large hole in the swivel bracket with center protrusion of washer facing outward. Position the swivel plate, Item E, over the end of the swivel handle and the ends of the carriage bolts. Make certain the centering protrusion of the cloverleaf washer fits into the center hole of the swivel plate. Attach and tighten the four locknuts, Item C, onto the carriage bolts. Note: When swivel handle is disengaged, swivel plate should turn freely.

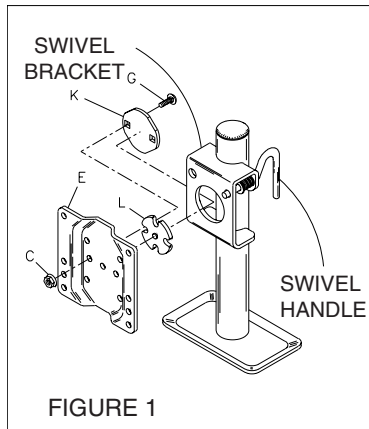


FIGURE 1

**Snap Ring Mount:** Mount swivel plate (R) to the tongue. Use a snap ring pliers to install retaining ring (T). Make certain that retaining ring is seated completely in bottom of swivel bracket groove. (See parts list drawing.)

## OPERATING INSTRUCTIONS

To pivot the trailer stand from vertical to horizontal, first remove any load on the stand. Pull out on the swivel handle and pivot stand to desired position. Be certain the swivel handle completely re-engages the swivel plate. Before towing the trailer, pivot the stand to horizontal position and be certain swivel handle is engaged.

**WARNING!** Use of the trailer stand without the swivel handle completely engaged could result in the trailer tongue suddenly dropping and could cause personal injury.

**CAUTION!** The 6726 trailer stand w/foot was designed to handle loads up to 1000 LBS./454 KG. Loads in excess of 1000 LBS./454 KG. may cause damage and possible failure.

**CAUTION!** The 6724 trailer stand w/wheel was designed to handle loads up to 600 LBS./272 KG. Loads in excess of 600 LBS./272 KG. may cause damage and possible failure.

## MAINTENANCE

Minimal maintenance is required to keep your Trailer Stand looking new and in good working order. Protect the finish by keeping it clean and periodically applying a coating of wax.

## MOUNTING INSTRUCTIONS

Place the stand on the trailer tongue as near to the coupler as convenient (See Fig. 2). Make sure the trailer stand can pivot up to towing position without interfering with other parts of the trailer or vehicle. Tighten all bolts evenly. Note: The model 6726 & 6724 trailer stand fits 2", 3", 4" or rotate swivel plate 90° for 5" rectangular trailer tongues up to 3" wide. Tongues wider than 3" require replacement of existing mounting bolts with bolts of appropriate length. Mounting on a round tongue requires modification of the tongue to provide a rectangular area. The optional swivel plate (M) is normally welded to the trailer tongue by the manufacturer. (See parts list drawing.)

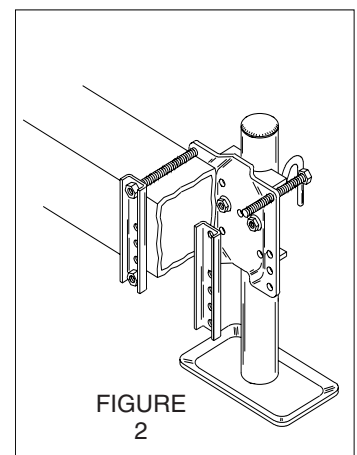
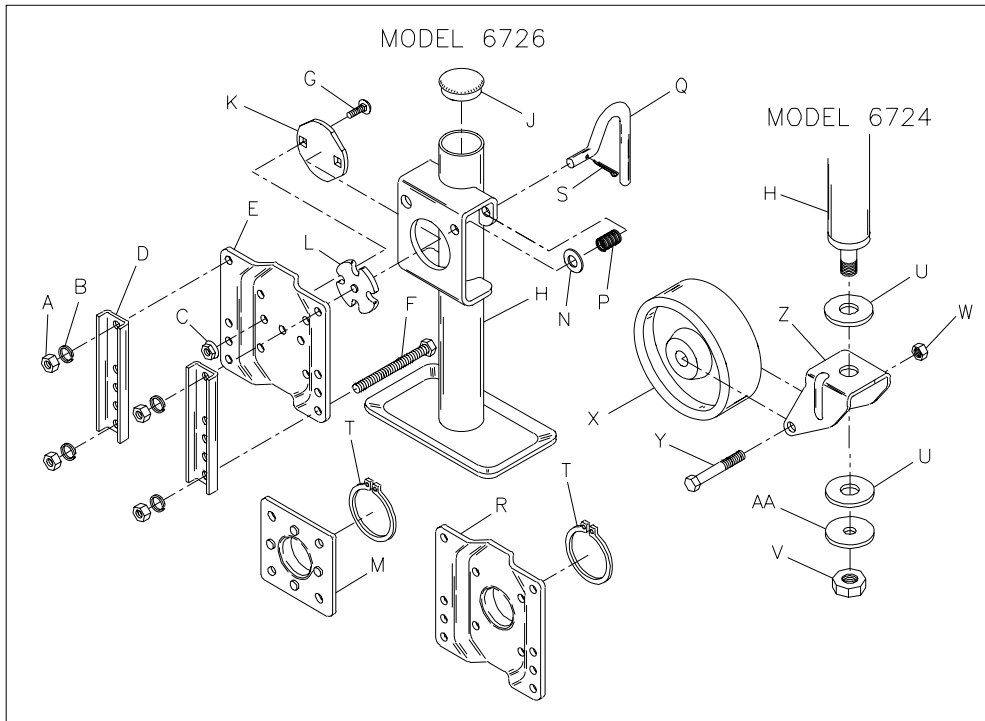


FIGURE 2

## Model 6726 & 6724 Pivoting Trailer Stand



Ref.	Description	Part No.
A	3/8-16 Hex Nut (4)	205050
B	3/8 Lock Washer (4)	205042
C	3/8-16 Hex Locknut (2)	205285
D	Clamp Plate (2)	403240
E	Swivel Plate	403276
F	3/8-16x4" Hex Bolt (4)	205145
G	3/8-16x1" Carriage Bolt (2)	205284
H	Post Assy	
	Mod. 6726 (Foot Style)	303293
	Mod. 6724 (Wheel Style)	303378
J	End Cap	203943
K	Swivel Bracket Washer	403282
L	Cloverleaf Washer	403283
M	Weld on Bracket (Opt.)	403411
N	3/8 Flat Washer	205024
P	Spring	203818
Q	Swivel Handle	403486
R	Snap Ring Mount (Opt.)	403413
S	3/32 x 3/4 Cotter Pin	207094
T	Retaining Ring 2 1/2" (Opt.)	203916
U	Nylon Washer (2)	203263
V	5/8 - 11 Locknut	203470
W	1/2 - 13 Hex Jam Locknut	203367
X	Poly Wheel	203681
Y	1/2 - 13x3 1/4" Cap Screw	205267
Z	Wheel Bracket	403243-PL
AA	Wheel Bracket Washer	403298



A Dependable Company Since 1886  
**DUTTON-LAINSON COMPANY**  
 Hastings, NE 68902 U.S.A. • Tel 402-462-4141 • Fax 402-460-4612  
 www.dutton-lainson.com • E-mail: dlsales@dutton-lainson.com

MADE IN  
U.S.A.